



PRODUCT GUIDE

SOUTH AFRICA 2020



YOUNG LIVING®
ESSENTIAL OILS

— Welcome to —

Y O U N G L I V I N G !

Our mission is to bring pure, authentic essential oils into every home in the world. People everywhere are looking for solutions for improving their wellness—physically, spiritually, emotionally, mentally and financially. I'm thrilled to have you as a Young Living member to not only discover the power of our mission for yourself but to also help share it with those around you.

People can be free when they are well and have the ability to travel, teach and give to those in need. Young Living offers everyone, everywhere the opportunity to do just that: be well, discover their own true potential and live a purposeful life. I'm so excited to see families, both parents and kids alike, joining together to take the opportunity to discover the incredible benefits of these products for themselves. This is such an exciting time of growth.

As the world leader in essential oils, we provide pure essential oils and naturally-derived products through our proprietary Seed to Seal® programme and its three pillars: Sourcing, Science and Standards. You can be a part of it by visiting our corporate-owned farms or partner

farms throughout the world. By inviting members like you to participate in our unique standards, we're sharing a firsthand look at our passion for quality; we're thrilled to share what we love with you.

This Product Guide represents more than 20 years of dedication to helping you find the freedom of whole-life wellness you've imagined. All of us at Young Living have made a great effort to offer you safe and effective essential oil-infused products to replace the harsh chemicals found in most homes and offices. This convenient, comprehensive guide is designed to help you quickly find what you are looking for and to help you discover new products that you haven't yet tried.

Our products are here to help you find your path to freedom and well-being. It is your moment to experience the benefits of the pure essence of nature. These products are crafted for every part of your life to support your body, calm your busy environment and uplift your spirit. Read on, discover new favourites and spread your passion for Young Living.



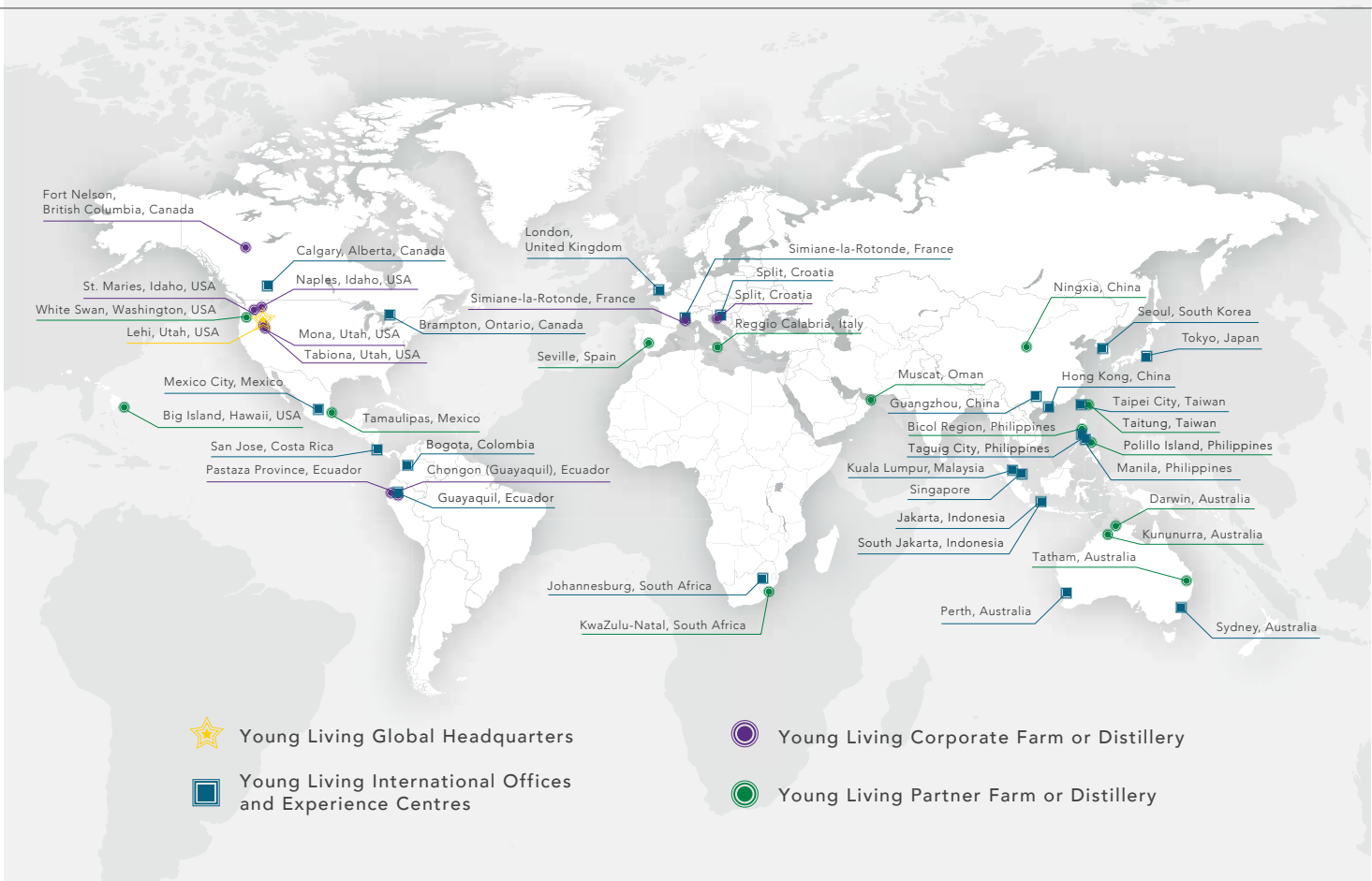
Mary Young

Co-founder and CEO, Young Living



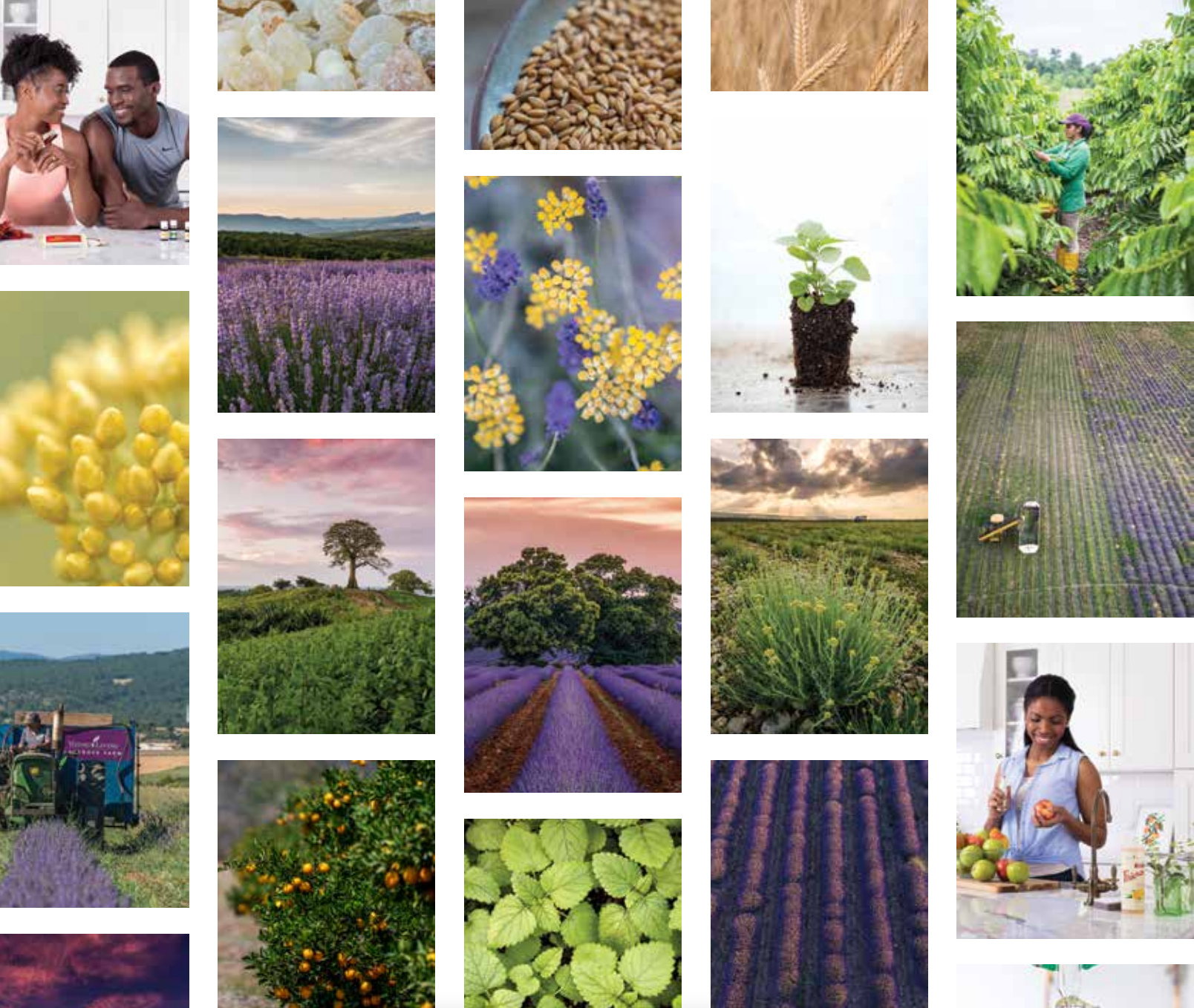
OUR PURPOSE

Young Living is a universally known, household name that is revered and respected for the countless benefits it brings to humanity. Propelled by the world's purest essential oils and oil-infused products, along with our passionate commitment to empowering individuals to whole-life wellness, we champion the modern essential oil movement. A global, purpose-driven wellness revolution is underway, and Young Living leads the charge.



OUR VISION

To bring Young Living Essential Oils
to every home in the world



OUR MISSION

Young Living Essential Oils honours its stewardship to champion nature's living energy — essential oils — by fostering a community of healing and discovery while inspiring individuals to wellness, purpose and abundance.



Table of

CONTENTS

- 02. Our Purpose
- 03. Our Mission
- 05. Seed to Seal
- 07. Our Farms
- 19. The D. Gary Young, Young Living Foundation
- 21. Five x Five
- 23. What are Essential Oils?
- 23. How to Use Essential Oils

25.

ESSENTIAL OIL PRODUCTS

- 27. Essential Oil Singles
- 32. Essential Oil Blends
- 35. Essential Oil Roll-Ons
- 35. Massage Oils
- 36. Essential Oil Diffusers
- 38. Essential Oil Accessories

39.

YOU AND YOUR HOME

- 41. Thieves
- 43. Body Care – Bath Soaps

- 44. Personal Care – Lip Balm
- 45. Wellness – NingXia Red

47.

SHARING THE YL LIFESTYLE

- 51. Essential Rewards
- 50. Starter Kits
- 52. Ready To Join
- 53. Index



For the most up-to-date pricing and product availability, please refer to the product section of YoungLiving.com.



[Facebook.com/YoungLivingAfrica](https://www.facebook.com/YoungLivingAfrica)



[Instagram.com/YoungLivingAfrica](https://www.instagram.com/YoungLivingAfrica)



[Twitter.com/YoungLivingAF](https://www.twitter.com/YoungLivingAF)



Young Living introduced Seed to Seal® to the world as a symbol of our commitment to providing your family with the best essential oil and oil-infused products in the world. Our Seed to Seal® promise ensures that with every targeted supplement, every skin care solution and every pure essential oil you use, you're enjoying the benefits of our global resources, industry leadership and decades of innovation. The result? A pristine final product that you know is created with conscientious Sourcing, Science and Standards.



SOURCING

We source from our corporate-owned farms, as well as partner farms and Seed to Seal-certified suppliers that adhere to our Partnership Principles. This empowers us to source conscientiously with priority on quality, sensitivity to community impact and mindfulness toward ecosystems. Ultimately, this empowers you to feel fully confident using our products.



SCIENCE

While our product quality starts in the fields, it's proven in the lab with research from our R&D team's 180 years of combined experience. We also test product samples as needed with two independent, respected and accredited labs. We create our pure, effective formulas to provide your family with products that contain the cleanest and most innovative ingredients available.



STANDARDS

As the leaders of the modern essential oils movement and a close partner with the earth, it's part of our stewardship to do business responsibly — from sustainably sourcing rare botanicals, to uplifting local communities, to going above and beyond to comply with local environmental rules. We choose to partner with sources we know produce pure essential oils and ingredients ethically and legally, setting a top-tier standard for sustainability that you can trust.

For more detailed information on our Seed to Seal pillars, visit SeedtoSeal.com.

GLOBAL FARMS

Young Living farms stand apart in the essential oil industry and set the standard for distilling essential oils. That's why our essential oil farms play such an integral role in our Seed to Seal® promise. We've invested unprecedented time and resources to ensure that these standards are prioritised at each of our corporate-owned farms, partner farms and Seed to Seal-certified suppliers, so your home and family get the very best nature has to offer.

SIMIANE-LA-ROTONDE LAVENDER FARM





AMANZI AMAHLE FARM

KWAZULU - NATAL, SOUTH AFRICA

The Amanzi Amahle Farm and Distillery works with local growers throughout the region to produce some of our most popular oils. This partnership provides the valuable instruction and resources smaller farms need to produce high-quality essential oils, while also dedicating efforts to conscientious treatment of the people, land and resources.

OILS FROM THIS FARM:

Tea Tree • Eucalyptus Radiata • Lemon • Orange • Grapefruit

NORTHERN LIGHTS FARM

FORT NELSON, BC, CANADA



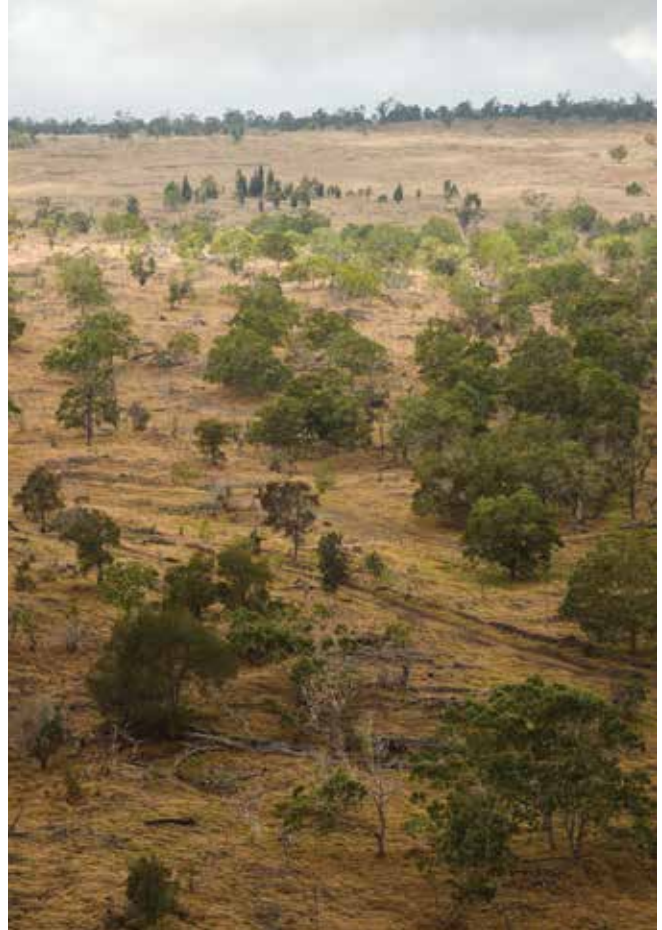
After extensive scouting and research in 2014, Young Living purchased land in British Columbia, Canada, for the Northern Lights Farm to be a main source of Black Spruce essential oil, an important oil in many popular blends. This pristine land remains free of synthetic chemicals and fertilisers.

OILS FROM THIS FARM :

*Northern Lights Black Spruce • Ledum
Yarrow • White Spruce*

KONA SANDALWOOD REFORESTATION PROJECT

BIG ISLAND, HAWAII, USA



Young Living's partnership with the Kona Sandalwood Reforestation Project is a great example of how our partnerships strive to preserve cultural values. At this location, only dead or dying sandalwood is harvested to maintain the ecological balance and to follow the deeply rooted Hawaiian belief in humans' responsibility to maintain a respectful relationship with the land.

OIL FROM THIS FARM :

Royal Hawaiian Sandalwood™



SIMIANE-LA-ROTONDE LAVENDER FARM

SIMIANE-LA-ROTONDE, FRANCE

Young Living's Simiane-la-Rotonde Lavender Farm is located in charming Provence, a region of France renowned for its beauty, fragrant lavender fields, and summer-long festivals. Home to our annual Lavender Harvest event, this farm has become a popular destination for essential oil lovers, artists and visitors looking to breathe in the captivating spirit of this special location.

OILS AND PRODUCT FROM THIS FARM:

*Lavender • Clary Sage • Rosemary
Lavandin • Einkorn*

BALKAN BOTANICAL FARM

MANOLOVO, BULGARIA



The Balkan Botanical Farm, located in beautiful Bulgaria, joins other carefully selected Young Living partner farms as a scenic, history-rich location ideal for cultivating premium botanicals. Situated in one of the most valued rose-growing regions in the world, the Balkan Botanical Farm specialises in cultivating superior roses. Recently, it has expanded its essential oil farm offerings to include Roman chamomile and valerian to support Young Living's supply of some of its most-loved products.

OILS FROM THIS FARM:

Roman Chamomile • Rose • Valerian

ST. MARIES LAVENDER FARM

ST. MARIES, IDAHO, USA



Our St. Maries Farm is where everything started! Decades ago, Gary Young brought pure, authentic lavender and melissa seeds from France and planted them on the 200 acres of land that now make up this beautiful farm. Today, over 120 acres of organically grown melissa are planted on this farm, making it the largest producer of Melissa oil in the world.

OILS FROM THIS FARM:

Lavender • Melissa • Idaho Tansy

FINCA BOTANICA FARM

CHONGON (GUAYAQUIL), ECUADOR



Building this farm and its state-of-the-art distillery started as one of Gary Young's passion projects. Today, Guayaquil's tropical climate helps nurture Young Living's 2,000 acres of rich soil, year-round harvests, and lush botanical life.

OILS AND PRODUCT FROM THIS FARM:

*Ylang Ylang • Palo Santo • Mastrante • Lemongrass • Eucalyptus
Blue • Dorado Azul Ocotea • Plectranthus Oregano • Rosa Muerta
• Cardamom • Geranium • Hyssop Ishpingo • Rosemary • Ruta
• Thyme • Vetiver • Chocolate*

WHISPERING SPRINGS FARM

MONA, UTAH, USA



The Young Living Whispering Springs Farm is an iconic lavender farm, not only to Young Living but also to the essential oil movement and the wellness community. This lavender farm is just a short drive from Young Living Global Headquarters and is home to events such as the Lavender Day festival, the Essential Oils and Animals Conference and the Fall Festival Draft Horse Show and Rodeo.

OILS FROM THIS FARM:

*Lavender • Hyssop • Clary Sage • Peppermint • Goldenrod •
Balsam Fir • Melissa Roman Chamomile • Juniper • Blue Yarrow •
Spearmint • German Chamomile*



HIGHLAND FLATS TREE FARM

NAPLES, IDAHO, USA

The Highland Flats Tree Farm is home to beautiful conifer trees from which essential oils derived from the great outdoors are produced. It's the location of Young Living's annual Winter Harvest and Spring Planting projects, which allow members to participate in the Seed to Seal process firsthand in a rural, peaceful setting and experience the thrill of working at the world's first fully automated, state-of-the-art essential oil distillery.

Oils from this farm:

*Idaho Blue Spruce • Idaho Balsam Fir • Pine
Idaho Ponderosa Pine • Western Red Cedar*

DOWN UNDER SANDALWOOD FARM

KUNUNURRA, AUSTRALIA



This location uses a remarkable approach to protecting precious sandalwood trees from India's growing black market by bringing seeds from India to be cultivated on this farm. Once safely planted in their new home, these trees are cultivated with the industry's highest standards of quality, sustainability, and environmental stewardship.

OIL FROM THIS FARM:

Sacred Sandalwood™

OUTBACK BOTANICAL RESERVE

DARWIN, AUSTRALIA



Australia's Northern Territory outback is the backdrop for this location's plantations of Australian cypress trees. Drawing on ethnobotanical use in the aboriginal pharmacopeia, the founder of the Outback Botanical Reserve discovered a new, now-patented method of distillation that resulted in Blue Cypress essential oil.

OIL FROM THIS FARM:

Blue Cypress



SKYRIDER WILDERNESS RANCH

TABIONA, UTAH, USA

This ranch is one of our most beloved locations, where many Young Living global leaders have already attended retreats and events. Nestled in the hills of Tabiona, Utah, this ranch was close to Gary Young's heart. It's a location where our unique einkorn grain thrives and is also a place where research is performed on distillation methods and new botanicals.

PRODUCT FROM THIS FARM:

Einkorn

TAIWAN COOPERATIVE FARM

TAITUNG, TAIWAN



This cooperative farm is actually made up of smaller individual farm operations that each focus on different oils. Like each unique operation, each oil has its own story and background that include its preservation, generational history and family significance, and the ingenuity and innovation necessary to create it.

OILS FROM THIS FARM:

Jade Lemon • Hong Kuai • Xiang Mao • Camphor Wood

LABBEEMINT PARTNER DISTILLERY

WHITE SWAN, WASHINGTON, USA



The Labbeemint Partner Distillery has been producing world-class mint oils at its family-run facility since the 1940s. Labbeemint's level of unmatched supply chain honesty and transparency make them the ideal primary supplier of Mentha piperita supplier for Young Living.

OILS FROM THIS FARM:

Peppermint • Spearmint

ARABIAN FRANKINCENSE DISTILLERY

MUSCAT , OMAN



Young Living is the first and only company in the world to distill and export Omani Sacred Frankincense oil and bring it into the Western world. The *Boswellia sacra* trees in this region carry a rich history, having been harvested from for the past 5,000 years. Today, their resin is harvested by the same method and on the same schedule to continue this centuries-old story.

OIL FROM THIS FARM:

Sacred Frankincense™

DALMATIA AROMATIC FARM

SPLIT, CROATIA



Dalmatia's landscape reflects its deep cultural roots and makes an ideal home for the botanical helichrysum. That's why this farm was founded with the intention of becoming a sustainable source for the popular Helichrysum oil, but the location has since continued to grow and cultivate even more botanicals.

OILS FROM THIS FARM:

Helichrysum • Sage • Juniper • Bay Laurel



GIHNDAGUN FARM

TATHAM, AUSTRALIA

As Young Living's newest producer of Tea Tree essential oil, Gihndagun—which means “respect the earth”—boasts 100 acres of rich soil that is cultivated with all-natural tree biomass, wood chips and naturally derived fertiliser. Crops are nourished with irrigation water, which is captured and reused, as well as with licensed water accessed from a natural creek and river.

OIL FROM THIS FARM:

Tea Tree

FINCA VICTORIA FARM

CIUDAD VICTORIA, MEXICO



The Finca Victoria Farm comprises 2,400 acres of rich farmland, with 50 groves of hand-tended fruit trees. Fresh lime and grapefruit rinds are cold-pressed on-site to produce essential oils of the highest quality. Because this farm is a zero-waste facility, every portion of the remaining fruit goes to good use.

OILS FROM THIS FARM:

Grapefruit • Lime

HAPPY PILI TREE FARM

BICOL REGION, PHILIPPINES



Chosen as a partner farm because of its conscientious harvesting methods, the Happy Pili Tree Farm is Young Living's main supplier of Elemi essential oil. With expertise on how to legally and sustainably source this precious plant, the farm provide fair wages to workers and protects natural resources.

OIL FROM THIS FARM:

Elemi

SEED TO SEAL

PARTNERSHIP PRINCIPLES

We dedicate significant resources to providing the purest oils possible. Purity starts on the farm, and we proudly source our essential oils from corporate farms, partner farms, and Seed to Seal-certified suppliers. These locations embrace our Seed to Seal Partnership Principles to help ensure the purity of our products at every point in the supply chain. Young Living believes that authenticity matters. As part of your wellness journey, we invite you to discover how pure, authentic essential oils are the core of who we are.

<i>Established Relationships</i>	<i>Seed to Seal Specifications</i>	<i>Binding Agreements</i>	<i>Stringent Testing</i>	<i>Ongoing Audits</i>
Our Sourcing and Executive teams have been hand-selecting renowned suppliers of premium botanicals and building relationships with them for decades. We continue to foster and expand these relationships.	All farms — whether a partner farm, Seed to Seal-certified supplier, or our very own corporate farms — sign declarations that they will follow our strict Seed to Seal specifications.	We back up these signed Seed to Seal declarations with legally binding contracts that require our partners to deliver on those declarations.	We have spent millions of dollars on a state-of-the-art lab with cutting-edge testing instruments, as well as a world-class team of researchers. If this team finds that a supplier's product doesn't meet our demanding standards, it never reaches our warehouse.	In addition to its testing, Young Living verifies the quality of our oils via third-party audits of our supply chain. Our intricate global sourcing network is designed to bring our members superior products, and we are proud to have implemented an objective audit process.

Why insist on these demanding, expensive practices? Because for Young Living, the big picture doesn't have much to do with the bottom line. We're driven to make the world a better place by sharing the benefits of pure essential oils. If we're not bringing families authentic quality, we're not bringing them authentic benefits. Learn more about these benefits at SeedtoSeal.com.



A young child with a joyful expression is leaning against a weathered, reddish-brown wall. The child is wearing a light-colored, possibly white, garment. The background is a blurred red brick wall with some green foliage visible. The overall tone is warm and positive.

THE D. GARY YOUNG YOUNG LIVING™ FOUNDATION

Empowering individuals. Defying limitations. Maximising potential.

The D. Gary Young, Young Living Foundation is committed to empowering individuals to achieve their potential and defy limitations by providing wellness and education opportunities to underserved communities.

We envision a world where children are provided with the resources and opportunities necessary to become confident, self-reliant leaders who can take control of their own health, provide for their families, and positively change their communities.

Since D. Gary Young started the Foundation in 2009, we have focused on unlocking possibilities by providing tools and resources to those whose needs receive far too little attention. Our mission and vision serve as our compass for providing long-term solutions.

OUR PROJECTS *and* PARTNERS



REBUILD NEPAL



YOUNG LIVING ACADEMY ECUADOR



HOPE FOR JUSTICE



SOLE HOPE



HEALING FAITH UGANDA

In 2015, major earthquakes in Nepal claimed nearly 9,000 lives and destroyed more than 900,000 homes, tragically leaving millions without a roof over their heads. In Yarsa, a mountain village completely destroyed by the earthquakes, the Foundation is rebuilding 112 homes. We've already rebuilt the primary school and are transforming it into our second Young Living Academy!

The Foundation's flagship project in Chongon, Ecuador, is home to our Sponsor a Child program. Built in 2009 by Young Living Founder and Chairman of the Board D. Gary Young and Co-Founder and CEO Mary Young, the Academy now educates 350 students from kindergarten through high school, with highly successful outcomes. In fact, while most children in Ecuador drop out of school by the eighth grade, and only 20 percent of local students graduate from high school, the Academy maintains a 97 percent attendance rate, and 100 percent of our seniors have graduated each year!

Hope for Justice's mission is to end human trafficking and modern-day slavery in our generation. The Young Living Foundation is joining the fight by funding the Hope for Justice Shine Career School in Phnom Penh, Cambodia, where girls rescued from sex trafficking can go to school and chase their dreams in nearly whatever career field they choose!

Thousands of children and adults in Uganda are victims of parasitic insects called jiggers. A female jigger will burrow into the feet and may ultimately cause life-threatening infections. Worse still, individuals with jiggers are often ostracised by their own families and communities. Sole Hope offers hope, healthier lives, and freedom from foot-related diseases through education, jobs, and medical relief. One of the organisation's primary focuses is to help children and adults become and remain jigger-free.

Healing Faith Uganda provides malaria education, prevention, and treatment to rural villages. In Africa, malaria kills one person every 60 seconds, and it is the leading cause of death on the continent for children under the age of 5. With the new D. Gary Young, Young Living Foundation Malaria Center, this organisation will be able to provide 80,000 individuals—nearly 100 a day—with feasible access to malaria treatment.

Learn how you can get involved by visiting YoungLivingFoundation.org.

YOUNG  LIVING

FIVE x FIVE

Five years, five key goals, one powerful pledge.

Young Living didn't just pioneer the modern-day essential oils movement—we've led the industry for 25 years; and we're not done yet. As we reach our quarter-century anniversary, we continue to focus on bold, world-changing goals. **In that pioneering spirit, meet the 5x5 Pledge.** The 5x5 Pledge not only redefines our role as industry leaders, but it will also elevate Young Living's positive impact on the earth, on communities and on families around the world. Over the next five years, beginning in 2019, Young Living pledges to expand the vision of our founder, D. Gary Young, in these five interconnected ways:





EMPOWER FIVE TIMES MORE PEOPLE EMPOWERED BY THE D. GARY YOUNG, YOUNG LIVING FOUNDATION

The Foundation currently changes thousands of lives every year by empowering the underserved, including rescuing women and children from human trafficking and providing families with tools to prevent malaria. We believe in uplifting people; so in the next five years, we pledge to quintuple the number of lives changed by the Foundation.

ACHIEVE FIVE YEARS TO ZERO WASTE

We are humbled by our responsibility and visibility as an industry green leader, and we take our stewardship of the planet seriously. In the next five years, we will take our global operations to zero waste status, and we will strive to offset our carbon footprint through our vast network of partner and corporate farms.

DEVELOP FIVE OR MORE CORPORATE-OWNED OR PARTNER FARMS DEVELOPED EACH YEAR

We are passionate about collaborating with nature to bring you the purest products on Earth. Our farms are the heart of our Seed to Seal commitment, and they will forever be part of our DNA. They help us create a more stable and controlled supply chain, allow us to stay on the forefront of essential oil research and empower our members with the knowledge of where their oils originate. Each year for the next five years, we will develop five or more of these beautiful corporate-owned and partner farms.

OPEN FIVE OR MORE NEW MARKETS OPENED EACH YEAR

With every new market Young Living opens, we open doors of wellness and empowerment to new members in that market and to talented new employees who are passionate about making a positive impact. Because our mission is to allow more people than ever to experience whole-life wellness through becoming a part of the Young Living family, we will open at least five new markets each year over the next five years.

REACH FIVE MILLION ADDITIONAL HOUSEHOLDS REACHED IN FIVE YEARS

As we expand our positive impact through philanthropy, green initiatives, new farms and new markets, our reach will also increase. Gary Young dedicated his life to bringing essential oils to every home in the world. Because we are committed to dramatically furthering that vision, we pledge to reach 5 million more households within five years.

WHAT ARE ESSENTIAL OILS?

Lovingly harvested from farm-grown and wildcrafted plants, herbs, and trees, essential oils are concentrated plant extracts obtained by careful steam distillation, cold pressing, or resin tapping. These pure essential oils are far more powerful than the botanicals from which they are extracted. We offer hundreds of single oils, blends and oil-infused products, each containing the optimal levels of specific, naturally occurring constituents to maximise their potency. Whether you use the oils for personal care or household solutions, every aspect of daily life can benefit from a drop of essential oil!



How to Use Essential Oils

Topically

Many essential oils are safe and beneficial to use directly on the skin.

- Place 2–3 drops of essential oil directly on the desired area and massage in. Repeat as desired. Always follow the label's dilution instructions.

CAUTION: *Essential oils are very potent and may be irritating to the skin. If irritation occurs, apply Young Living's V-6 Vegetable Oil Complex or any pure vegetable oil to the area to dilute. Citrus-based oils and blends may cause temporary photosensitivity.*

ESSENTIAL OILS & OIL-INFUSED PRODUCTS

Pure, authentic essential oils are the foundation of everything Young Living does. We offer products in four categories designed to enrich and simplify your life every day:



ESSENTIAL OILS

Infuse your body, mind, and spirit to discover the pure, grounded life that you've always wanted. Essential oil singles, blends or custom infusions invite a new measure of wellness to your life.

(See page ... for Essential Oils.)



YOU AND YOUR HOME

Keep your family and home clean and protected with naturally derived products that are perfect for everyday use. Our home care products feature the ingredients you want, without the ones you don't.

(See page .. for You and Your Home)



WELLNESS

Satisfy your body's nutritional needs while keeping your taste buds happy. This lineup of nutritional supplements and healthful, tasty treats is full of options that your whole family will love.

(See page .. for Wellness)



ESSENTIAL OIL

PRODUCTS

Essential oils are the heart of Young Living and the foundation of our product line. Browse through our products to discover versatile, powerful essential oils and blends backed by our Seed to Seal® promise and find the essential oils that are right for you.



ESSENTIAL OIL

SINGLES

With more than 20 years of research and experience, Young Living has perfected our proprietary Seed to Seal® standard to ensure that our essential oils are the finest available. This dedication to excellence is what makes our essential oils stand out from the rest and what makes a noticeable quality difference you can experience with every bottle.





BASIL

Ocimum basilicum

CODE	SIZE	WHSL.	RETAIL	PV
350038	15 ml	R361.00	R470.01	25,5

Basil essential oil has a fresh, herbaceous aroma that can be calming and refreshing.

Dilute with V-6 or another carrier oil when applying directly to desired area.

HOW TO USE | |

Diffuse, directly inhale, or dilute with V-6 Vegetable Oil Complex and apply topically.



BERGAMOT

Citrus aurantium bergamia

CODE	SIZE	WHSL.	RETAIL	PV
358538	5 ml	R187.00	R250.00	13,25

Bergamot has a light, citrusy scent that can be both uplifting and relaxing when diffused.

HOW TO USE | |

Diffuse, directly inhale, or dilute with V-6 Vegetable Oil Complex and apply topically.



CEDARWOOD

Cedrus atlantica

CODE	SIZE	WHSL.	RETAIL	PV
350938	15 ml	R163.00	R210.00	11,5

With a warm balsamic aroma, Cedarwood essential oil can help create a calming and comforting atmosphere when diffused. Add Cedarwood essential oil to your favourite skin care products and apply topically or massage into the scalp for the appearance of healthy-looking hair.

HOW TO USE | | Diffuse, directly inhale, or apply topically.



CITRONELLA

Cymbopogon nardus

CODE	SIZE	WHSL.	RETAIL	PV
532338	5 ml	R128.00	R170.00	9

Citronella essential oil is ideal for diffusing indoors to refresh the air.

HOW TO USE | | Diffuse, directly inhale, or dilute with V-6 Vegetable Oil Complex and apply topically.



CLARY SAGE

Salvia sclarea

CODE	SIZE	WHSL.	RETAIL	PV
352038	5 ml	R266.00	R350.00	18,75

Clary Sage has an herbaceous aroma that is believed to create a calm and relaxing environment.

HOW TO USE | | Diffuse, directly inhale, or dilute with V-6 Vegetable Oil Complex and apply topically.



COPAIBA

Copaifera reticulata

CODE	SIZE	WHSL.	RETAIL	PV
354638	5 ml	R312.00	R410.00	22

The gum resin tapped from the copaiba tree in Brazil is steam distilled to produce Copaiba essential oil, which is known for its high levels of beta-caryophyllene and a sweet aroma.

HOW TO USE | | Diffuse, directly inhale, or apply topically.



CYPRESS

Cupressus sempervirens

CODE	SIZE	WHSL.	RETAIL	PV
332238	5 ml	R138.00	R180.00	9,75

Cypress has a fresh, herbaceous aroma that can promote a sense of security and grounding.

HOW TO USE | | Diffuse, directly inhale, or apply topically.



EUCALYPTUS GLOBULUS

Eucalyptus globulus

CODE	SIZE	WHSL.	RETAIL	PV
354138	5 ml	R109.00	R140.00	7,75

Eucalyptus Globulus has an earthy, fresh aroma and is used in many skin care products for its cleansing properties.

HOW TO USE | | Diffuse, directly inhale, or dilute with V-6 Vegetable Oil Complex and apply topically.

- PHOTOSENSITIVITY:** Avoid direct sunlight and UV rays for at least 12 hours after application to skin.
- TOPICAL:** Apply directly to skin. Dilution may be required. See label for use.

- DILUTE:** Topical dilution required. See label for use.
- AROMATIC:** Inhale directly or use a Young Living diffuser.
- INTERNALLY (PLUS):** See label for use.



EUCALYPTUS RADIATA

Eucalyptus radiata

CODE	SIZE	WHSL.	RETAIL	PV
351638	5 ml	R121.00	R160.00	8,5

Eucalyptus Radiata essential oil is loved for its fresh, pungent, and fruity aroma, making it ideal for massage after activity. Diffuse Eucalyptus Radiata to promote a stimulating and rejuvenating environment.

HOW TO USE | 🌿 🕯️ 🔥 | Diffuse, directly inhale, or dilute with V-6 Vegetable Oil Complex and apply topically.



FRANKINCENSE

Boswellia carterii

CODE	SIZE	WHSL.	RETAIL	PV
354938	5 ml	R432.00	R570.00	30,5
CODE	SIZE	WHSL.	RETAIL	PV
354838	15 ml	R1 071.00	R1 410.00	75,5

Diffuse Frankincense essential oil during meditation to help with grounding and purpose or add it to your personal care products to promote a radiant complexion.

HOW TO USE | 🌿 🕯️ 🔥 | Diffuse, directly inhale, or apply topically.



GERANIUM

Pelargonium graveolens

CODE	SIZE	WHSL.	RETAIL	PV
355538	5 ml	R272.00	R360.00	19,25

Geranium essential oil is produced from the steam distillation of the geranium's fragrant flowers and leaves and has an aroma that encourages peaceful, spiritual feelings.

HOW TO USE | 🌿 🕯️ 🔥 | Diffuse, directly inhale, or apply topically.



GRAPEFRUIT

Citrus paradisi

CODE	SIZE	WHSL.	RETAIL	PV
356138	5 ml	R109.00	R140.00	7,75
CODE	SIZE	WHSL.	RETAIL	PV
356038	15 ml	R245.00	R320.00	17,25

Grapefruit has a wonderfully uplifting citrus aroma. Brighten your home by diffusing Grapefruit essential oil in the morning.

HOW TO USE | 🌿 🕯️ 🔥 🌞 | Diffuse, directly inhale, or dilute with V-6 Vegetable Oil Complex and apply topically.



HELICHRYSUM

Helichrysum italicum

CODE	SIZE	WHSL.	RETAIL	PV
356338	5 ml	R1 240.00	R1 630.00	87,5

A great oil to diffuse when studying or doing homework, Helichrysum has a stimulating aroma that no home should be without.

HOW TO USE | 🌿 🕯️ 🔥 | Diffuse, directly inhale, or apply topically.



LAVENDER

Lavandula angustifolia

CODE	SIZE	WHSL.	RETAIL	PV
358038	5 ml	R170.00	R220.00	12
CODE	SIZE	WHSL.	RETAIL	PV
357538	15 ml	R344.00	R450.00	24,25

Lavender is a popular essential oil long loved for its calming, soothing fragrance. When diffused, Lavender adds a clean and fresh scent to any room. It is also a relaxing addition to body care products and baths.

HOW TO USE | 🌿 🕯️ 🔥 | Diffuse, directly inhale, or apply topically.



LEMON

Citrus limon

CODE	SIZE	WHSL.	RETAIL	PV
357338	5 ml	R89.00	R120.00	6,25
CODE	SIZE	WHSL.	RETAIL	PV
357838	15 ml	R163.00	R210.00	11,5

Containing the naturally occurring constituent limonene, Lemon is a key component in many popular essential oil-infused products. Lemon is used worldwide in cleaners and soaps for its refreshing scent.

HOW TO USE | 🌿 🕯️ 🔥 🌞 | Diffuse, directly inhale, or dilute with V-6 Vegetable Oil Complex and apply topically.



LEMONGRASS

Cymbopogon flexuosus

CODE	SIZE	WHSL.	RETAIL	PV
358238	5 ml	R89.00	R120.00	6,25
CODE	SIZE	WHSL.	RETAIL	PV
358138	15 ml	R163.00	R210.00	11,25

Lemongrass is a key ingredient in Purification® blend and Ortho Sport® Massage Oil. Lemongrass essential oil can be worn alone or mixed with other complementary oils to help awaken the senses.

HOW TO USE | 🌿 🕯️ 🔥 🌞 | Diffuse, directly inhale, or dilute with V-6 Vegetable Oil Complex and apply topically.



MARJORAM

Origanum majorana

CODE	SIZE	WHSL.	RETAIL	PV
358438	15 ml	R507.00	R670.00	35,75

Marjoram is a key oil used in the Raindrop Technique® and can be used in massage after exercise.

HOW TO USE | 🌿 🌵 🌸 | Diffuse, directly inhale, or dilute with V-6 Vegetable Oil Complex and apply topically.



MYRRH

Commiphora myrrha

CODE	SIZE	WHSL.	RETAIL	PV
359238	5 ml	R377.00	R500.00	26,75

Myrrh has a long time history of use in skin care for its moisturising properties to cleanse dry skin. It was highly regarded in biblical times and has an aroma that brings a deeper sense of spirituality.

HOW TO USE | 🌿 🌵 | Diffuse, directly inhale, and apply topically.



ORANGE

Citrus sinensis

CODE	SIZE	WHSL.	RETAIL	PV
360338	5 ml	R85.00	R110.00	6
CODE	SIZE	WHSL.	RETAIL	PV
360238	15 ml	R156.00	R210.00	11

Orange is a favourite for diffusion and aromatic uses. It may be calming and bring feelings of inspiration.

HOW TO USE | 🌿 🌵 🌸 🌞 | Diffuse, directly inhale, or dilute with V-6 Vegetable Oil Complex and apply topically.



OREGANO

Origanum vulgare

CODE	SIZE	WHSL.	RETAIL	PV
360538	15 ml	R404.00	R530.00	28,5

Oregano essential oil is a key oil used in the Raindrop Technique® and has a strong herbaceous fragrance.

HOW TO USE | 🌿 🌵 🌸 | Diffuse, directly inhale, or dilute with V-6 Vegetable Oil Complex and apply topically.



PATCHOULI

Pogostemon cablin

CODE	SIZE	WHSL.	RETAIL	PV
357038	5 ml	R248.00	R330.00	17,5

Patchouli essential oil may be used topically to improve the appearance of dry skin and is an ideal complement when added to your favourite skin care products. Diffuse this oil for a calming, relaxing, and peaceful fragrance.

HOW TO USE | 🌿 🌵 | Diffuse, directly inhale, and apply topically.



PEPPERMINT

Mentha piperita

CODE	SIZE	WHSL.	RETAIL	PV
361338	5 ml	R145.00	R190.00	10,25
CODE	SIZE	WHSL.	RETAIL	PV
361438	15 ml	R312.00	R410.00	22

Peppermint can be used topically to cool the skin or diffused for a scent that invites feelings of peace.

HOW TO USE | 🌿 🌵 🌸 | Diffuse, directly inhale, or dilute with V-6 Vegetable Oil Complex to apply topically.



ROSE

Rosa damascena

CODE	SIZE	WHSL.	RETAIL	PV
362338	5 ml	R2 707.00	R3 560.00	93,75

Rose has a beautiful aroma that encourages feelings of positive self-reflection. 9 kilograms of rose petals are distilled for every 5-ml bottle of oil produced.

HOW TO USE | 🌿 🌵 | Diffuse, directly inhale, or apply topically.



SACRED FRANKINCENSE

Boswellia sacra

CODE	SIZE	WHSL.	RETAIL	PV
355038	5 ml	R616.00	R810.00	43,5

Sacred Frankincense™ essential oil comes from the distillation of the resin of the *Boswellia sacra* frankincense tree. This oil is ideal for those who wish to take their spiritual journey and meditation experiences to a higher level.

HOW TO USE | 🌿 🌵 | Diffuse, directly inhale, or apply topically.



SPEARMINT

Mentha spicata

CODE	SIZE	WHSL.	RETAIL	PV
363838	5 ml	R156.00	R210.00	11

Spearmint is milder than Peppermint and is characterised by an invigorating fragrance that is uplifting and calming.

HOW TO USE | 🌿 🔥 🍊 | Diffuse, directly inhale, or dilute with V-6 Vegetable Oil Complex and apply topically.



TEA TREE

Melaleuca alternifolia

CODE	SIZE	WHSL.	RETAIL	PV
358638	5 ml	R163.00	R210.00	11,5
CODE	SIZE	WHSL.	RETAIL	PV
358738	15 ml	R377.00	R500.00	26,75

Tea Tree oil, also known as Melaleuca Alternifolia, is often used in skin care for its cleansing properties.

HOW TO USE | 🌿 🔥 | Diffuse, directly inhale, or apply topically.



VETIVER

Vetiveria zizanoides

CODE	SIZE	WHSL.	RETAIL	PV
365138	5 ml	R299.00	R390.00	21,25

Vetiver has an earthy and grounding aroma. Diffuse this unique essential oil for a calming and relaxing fragrance throughout the home.

HOW TO USE | 🌿 🔥 | Diffuse, directly inhale, or apply topically.



WINTERGREEN

Gaultheria procumbens

CODE	SIZE	WHSL.	RETAIL	PV
356738	5 ml	R124.00	R160.00	8,75

Wintergreen's refreshing minty aroma is stimulating and invigorating. It's a great addition to lotions that are applied after activity.

HOW TO USE | 🌿 🔥 🍊 | Diffuse, directly inhale, or dilute with V-6 Vegetable Oil Complex and apply topically.



YLANG YLANG

Cananga odorata

CODE	SIZE	WHSL.	RETAIL	PV
356838	5 ml	R245.00	R320.00	17,25

Ylang Ylang essential oil is perfect for diffusing to enjoy its romantic and relaxing sweet floral aroma.

HOW TO USE | 🌿 🔥 🍊 | Diffuse, directly inhale, or apply topically.








ESSENTIAL OIL

BLENDS

When essential oils work in harmony, the combined effect can be transformative. Our blends are the results of years of rigorous testing and practical application, producing synergistic blends of complementary oils that can be used in every aspect of your life.



-  **PHOTOSENSITIVITY:** Avoid direct sunlight and UV rays for at least 12 hours after application to skin.
-  **TOPICAL:** Apply directly to skin. Dilution may be required. See label for use.

-  **DILUTE:** Topical dilution required. See label for use.
-  **AROMATIC:** Inhale directly or use a Young Living diffuser.
-  **INTERNALLY (PLUS):** See label for use.



CHRISTMAS SPIRIT

CODE	SIZE	WHSL.	RETAIL	PV
335638	5 ml	R147.00	R190.00	10,5

Experience the positive energy of the holidays all year long with the aromas of Orange, Cinnamon Bark, and Black Spruce essential oils in Christmas Spirit™.

INGREDIENTS | Orange, Cinnamon Bark, Black Spruce

HOW TO USE | 🌿 🕯️ 🌸 🌞 |

Diffuse, inhale directly, or dilute with V-6 Vegetable Oil Complex and apply topically.



CITRUS FRESH

CODE	SIZE	WHSL.	RETAIL	PV
334438	5 ml	R106.00	R140.00	7,5
CODE	SIZE	WHSL.	RETAIL	PV
331838	15 ml	R223.00	R290.00	15,75

Featuring the fresh, bright aromas of five citrus essential oils plus Spearmint, Citrus Fresh™ is perfect to wear as an inspiring personal fragrance or to diffuse and freshen any indoor environment.

INGREDIENTS | Orange, Grapefruit, Mandarin, Tangerine, Lemon, Spearmint

HOW TO USE | 🌿 🕯️ 🌸 🌞 |

Diffuse, directly inhale, or dilute with V-6 Vegetable Oil Complex to apply topically.



DIGIZE

CODE	SIZE	WHSL.	RETAIL	PV
332438	15 ml	R478.00	R630.00	33,75

A unique and proprietary Young Living essential oil blend, DiGize™ combines Tarragon, Ginger, Peppermint, Juniper, Fennel, Lemongrass, Anise and Patchouli essential oils.

INGREDIENTS | Tarragon, Ginger, Peppermint, Juniper, Fennel, Lemongrass, Anise, Patchouli

HOW TO USE | 🌿 🕯️ 🌸 🌞 |

Diffuse, inhale directly, or dilute with V-6 Vegetable Oil Complex and apply topically.



DRAGON TIME

CODE	SIZE	WHSL.	RETAIL	PV
332738	15 ml	R713.00	R940.00	50,25

The aroma of Dragon Time™ is designed to invite positive emotions for women, especially during their monthly cycle. This blend is recommended for both young and mature women.

INGREDIENTS | Clary Sage, Fennel, Lavender, Marjoram, Yarrow, Jasmine

HOW TO USE | 🌿 🕯️ 🌸 🌞 |

Diffuse, inhale directly, or apply topically.



JOY

CODE	SIZE	WHSL.	RETAIL	PV
337138	5 ml	R262.00	R340.00	18,5

The aroma of Joy™ invites a sense of romance, bliss, and warmth when diffused. When worn as a fragrance, it invites togetherness.

INGREDIENTS | Bergamot, Lemon, Palmarosa, Ylang Ylang, Rose, Geranium, Jasmine, Roman Chamomile, Coriander, Tangerine

HOW TO USE | 🌿 🕯️ 🌸 🌞 |

Diffuse, inhale directly, or apply topically.



MELROSE

CODE	SIZE	WHSL.	RETAIL	PV
337938	5 ml	R134.00	R180.00	9,5

Melrose™ is a blend of essential oils with powerful cleansing properties that supports the appearance of skin.

INGREDIENTS | Rosemary, Clove, Tea Tree, Niaouli

HOW TO USE | 🌿 🕯️ 🌸 🌞 |

Diffuse, inhale directly, or dilute with V-6 Vegetable Oil Complex and apply topically.



PANAWAY

CODE	SIZE	WHSL.	RETAIL	PV
339138	5 ml	R514.00	R680.00	36,25

Apply PanAway® after exercise or to the neck and back anytime for a soothing and stimulating aromatic experience.

INGREDIENTS | Wintergreen, Helichrysum, Clove, Peppermint.

HOW TO USE | 🌿 🕯️ 🌸 🌞 |

Dilute with V-6 Vegetable Oil Complex and apply topically on location as need or use in a massage.



PEACE & CALMING

CODE	SIZE	WHSL.	RETAIL	PV
339838	5 ml	R492.00	R650.00	34,75

Peace & Calming® provides a soothing and relaxing atmosphere when diffused, added to a bath, or during meditation and yoga. When applied topically, Peace & Calming® may improve the appearance of skin and support a healthy-looking glow.

INGREDIENTS | Tangerine, Ylang Ylang, Blue Tansy, Orange, Patchouli

HOW TO USE | 🌿 🕯️ 🌸 🌞 |

Diffuse, inhale directly, or dilute with V-6 Vegetable Oil Complex and apply topically.



PURIFICATION

CODE	SIZE	WHSL.	RETAIL	PV
338938	5 ml	R223.00	R290.00	15,75
CODE	SIZE	WHSL.	RETAIL	PV
339938	15 ml	R383.00	R500.00	27

The sweet, refreshing scent of Purification® instantly deodorises and neutralises the air. Apply topically to enjoy the outdoors annoyance free.

INGREDIENTS | Lemongrass, Rosemary, Tea Tree, Myrtle, Citronella, Lavandin

HOW TO USE | 🌿 🕯️ 🔥 | Diffuse, inhale directly, or apply topically.



VALOR

CODE	SIZE	WHSL.	RETAIL	PV
343038	5 ml	R561.00	R740.00	39,75
CODE	SIZE	WHSL.	RETAIL	PV
342938	15 ml	R1 090.00	R1 430.00	77,5

Valor® essential oil blend is a top seller and one of Young Living Founder D. Gary Young's favourite blends. Apply to wrists, chest, base of neck, and bottoms of feet or add to Young Living Bath & Shower Gel Base to feel empowered and uplifted.

INGREDIENTS | Coconut Oil, Black Spruce, Blue Tansy, Frankincense, Camphor Wood, Geranium

HOW TO USE | 🌿 🕯️ 🔥 | Diffuse, inhale directly, or apply topically.



R.C.

CODE	SIZE	WHSL.	RETAIL	PV
340938	5 ml	R147.00	R190.00	10,5
CODE	SIZE	WHSL.	RETAIL	PV
340538	15 ml	R330.00	R430.00	23,25

R.C.™ is an ideal complement to V-6 Vegetable Oil Complex for creating a spa-like atmosphere during massage. It can also be used in place of Aroma Siez in the Raindrop Technique.

INGREDIENTS | Eucalyptus Globulus, Eucalyptus Radiata, Eucalyptus Citriodora, Myrtle, Black Spruce, Peppermint, Pine, Lavender, Marjoram, Cypress

HOW TO USE | 🌿 🕯️ 🔥 🌪️ | Diffuse, inhale directly, or dilute with V-6 Vegetable Oil Complex and apply topically.



WHITE ANGELICA

CODE	SIZE	WHSL.	RETAIL	PV
342838	5 ml	R408.00	R540.00	28,75

White Angelica™ contains pure Melissa and Bergamot essential oils, promotes feelings of protection and security when diffused, and can be used to guard against negative energy.

INGREDIENTS | Sweet Almond Oil, Bergamot, Melissa, Geranium, Ylang Ylang, Rose, Myrrh, Royal Hawaiian Sandalwood, Hyssop, Coriander, Black Spruce

HOW TO USE | 🌿 🕯️ 🔥 🌪️ | Diffuse, inhale directly, or apply topically.



RAVEN

CODE	SIZE	WHSL.	RETAIL	PV
341538	5 ml	R233.00	R310.00	16,5

Raven™ is a cleansing blend of Ravintsara, Peppermint, Eucalyptus Radiata, and other essential oils. Raven creates a cooling sensation when applied topically to the chest and throat.

INGREDIENTS | Ravintsara, Peppermint, Eucalyptus Radiata, Wintergreen, Lemon

HOW TO USE | 🌿 🕯️ 🔥 🌪️ | Diffuse, inhale directly, or dilute with V-6 Vegetable Oil Complex and apply topically.



YL HAVEN

CODE	SIZE	WHSL.	RETAIL	PV
466338	5 ml	R195.00	R220.00	12
CODE	SIZE	WHSL.	RETAIL	PV
463038	15 ml	R432.00	R570.00	30,5

YL Haven™ is the first product to contain the unique combination of Lime and Vanilla essential oils. With an aroma that is the perfect blend of tropical and citrus, YL Haven is uniquely relaxing and comforting.

INGREDIENTS | Copaiba, Lime, Cedarwood, Vanilla, Ocotea, Lavender

HOW TO USE | 🌿 🕯️ 🔥 🌪️ | Diffuse, inhale directly, or dilute with V-6 Vegetable Oil Complex and apply topically.



THIEVES

CODE	SIZE	WHSL.	RETAIL	PV
519738	5 ml	R208.00	R270.00	14,75
CODE	SIZE	WHSL.	RETAIL	PV
342338	15 ml	R492.00	R650.00	34,75

Thieves® essential oil blend was inspired by the legend of four 15th-century French thieves who formulated a special aromatic combination composed of clove, rosemary, and other botanicals. Thieves is a powerful blend that contains the naturally derived constituents limonene, eugenol, and eucalyptol.

INGREDIENTS | Clove, Cinnamon Bark, Rosemary, Lemon, Eucalyptus Radiata

HOW TO USE | 🌿 🕯️ 🔥 🌪️ | Diffuse, inhale directly, or dilute with V-6 Vegetable Oil Complex and apply topically.

ESSENTIAL OIL ROLL-ONS

With beautiful, contemporary labels, these roll-ons are an excellent way to use the same essential oil blends that you love when you're on the move. Stay tuned as we continue to expand our new packaging and labels to your favourite oils and oil-infused products.

BREATHE AGAIN ROLL-ON

CODE	352838
SIZE	10 ml
WHSL.	R376.00
RETAIL	R490.00
PV	26,5



Breathe Again™ Roll-On features four types of Eucalyptus essential oils, including Eucalyptus Blue, which is grown and distilled at the Young Living farm in Ecuador.

INGREDIENTS | Coconut Oil, Eucalyptus Staigeriana, Eucalyptus Globulus, Eucalyptus Radiata, Eucalyptus Blue, Laurus Nobilis,

Peppermint, Copaiba, Myrtle, Blue Cypress, Rosehip

HOW TO USE | Apply generously to chest and neck as desired.

DEEP RELIEF ROLL-ON

CODE	353438
SIZE	10 ml
WHSL.	R390.00
RETAIL	R510.00
PV	27,5



Blended with Peppermint essential oil, Deep Relief™ Roll-On creates a cooling sensation when applied topically. With a fresh aroma that is both invigorating and relaxing, this blend is perfect to keep in your gym bag to use during a workout.

INGREDIENTS | Peppermint, Coconut Oil, Idaho Balsam Fir, Clove, Vetiver, Wintergreen,

Lemon, Helichrysum, Copaiba, Dorado Azul

HOW TO USE | Apply generously on temples, back of neck, or wherever necessary.

MASSAGE OILS

Take the power of massage to a whole new level with our line of massage oils. The unique essential oil blends in our massage oils have the power to bring your massage experience to new heights.

YOUNG LIVING V-6

CODE	303138
SIZE	236 ml
WHSL.	R315.00
RETAIL	R410.00
PV	22,25



Young Living V-6 can be used to create custom massage oils or to dilute essential oils for sensitive skin.

INGREDIENTS | Coconut Oil, Sesame Seed Oil, Grape Seed Oil, Sweet Almond Oil, Wheat Germ Oil, Sunflower Seed Oil, Olive Oil

HOW TO USE | For direct application blend 1 drop essential oil in 1–8 teaspoons V-6. For topical applications, apply 15–30 drops of essential oils to 1/8–1/4 cup V-6. Stronger oils (e.g., Cinnamon, Clove, Oregano) require more dilution than gentler oils. Shake well before using.

ESSENTIAL OIL

DIFFUSERS

Transform your home, office or personal space into your personal aromatherapy oasis! Our elegantly designed diffusers will allow you to infuse essential oils into every part of your space and create a spa-like experience anywhere life takes you.



DESERT MIST ULTRASONIC DIFFUSER

CODE	28636
WHSL.	R902.00
RETAIL	R1 190.00
PV	38,25



Young Living's Dewdrop™ Diffuser functions as a humidifier, atomiser and aroma diffuser in one simple to-use product. Custom designed with up to four

hours of continuous-run diffusion, automatic shutoff and ambient light control, Young Living's Dewdrop Diffuser can transform any space into a spa-like atmosphere.

INCLUDES | *Lemon 5 ml; Orange 5 ml*

HOW TO USE | *Fill well with room-temperature water (tap or spring is recommended), add 8-12 drops of your chosen essential oil/s and turn on the diffuser. (See instruction booklet for complete usage details)*

LANTERN DIFFUSER

CODE	28639
WHSL.	R1 201.00
RETAIL	R1 580.00
PV	50,75



Complement your décor and set the mood with the Lantern Diffuser. A warm and welcoming invitation for guests, this stunning lantern made with exquisite metal and glass details transforms any room by permeating the

air with the aroma of your favourite essential oils.

INCLUDES | *Lemon 5 ml; Orange 5 ml*

HOW TO USE | *For use, safety and care information, refer to the Lantern Diffuser Operation Manual.*

DEWDROP DIFFUSER

CODE	533038
WHSL.	R902.00
RETAIL	R1 190.00
PV	38,25



Young Living's Dewdrop™ Diffuser functions as a humidifier, atomiser and aroma diffuser in one simple to-use product.

Custom designed with up to four hours of continuous-run diffusion, automatic shutoff and ambient light control, Young Living's Dewdrop Diffuser can transform any space into a spa-like atmosphere.

INCLUDES | *Lemon 5 ml; Orange 5 ml*

HOW TO USE | *Fill well with room-temperature water (tap or spring is recommended), add 8-12 drops of your chosen essential oil/s and turn on the diffuser. (See instruction booklet for complete usage details)*

ORB DIFFUSER

CODE	522738
WHSL.	R 376.00
RETAIL	R490.00
PV	16



Our portable, USB-powered Orb Diffuser is specially designed to be spill-proof, making it ideal for the office, car or home. The Orb also provides intermittent (blue LED

light) or continuous (green LED light) diffusion for up to 4.5 hours and includes three essential oil wicks.

(Coming Soon)

HOW TO USE | *Fill the base with tap water, add 5-6 drops of essential oil directly onto the essential oil wick, close the diffuser and select intermittent or continuous diffusion. (See instruction booklet for complete usage details)*

ESSENTIAL OIL ACCESSORIES

Bring your essential oils experience into full balance. Including everything from durable carrying cases to colour-coded bottle labels, our accessories make it easy to keep your precious essential oils organised.

30 OIL CASE

CODE	5279
WHSL.	R537.00
RETAIL	R710.00
PV	0



This essential oil carrying case allows you to transport up to 30 essential oils or blends with style. Made out of sturdy EV foam, this case is designed with a durable handle and foam insert to secure and protect each bottle while on the go.

AROMAGLIDE ROLLER FITMENTS

CODE	4578
WHSL.	R141.00
RETAIL	R190.00
PV	0



Transform many of your favourite Young Living essential oils into an easy-to-use roll-on bottle with the patented AromaGlide™ advanced roller fitments technology. Each fitment is customised to fit a 5 ml or 15 ml bottle with an "Sb" marking on the bottom. Includes 10 AromaGlide fitments and caps.

ESSENTIAL OIL SAMPLE BOTTLES

CODE	3194
WHSL.	R138.00
RETAIL	R180.00
PV	0



Essential oil sample bottles are a convenient, simple way to pass out essential oil samples to friends, family and prospective customers and members. Take these empty 2 ml bottles on the go to fill with your choice of essential oil. All 25 bottles come with lids and drop reducers.

ESSENTIAL OIL BOTTLE CAP LABELS

CODE	3939
WHSL.	R43.00
RETAIL	R60.00
PV	0



These colour-coded labels fit perfectly on any 5 ml or 15 ml essential oil bottle cap to help you stay organised and find the right bottle quickly and easily.

ESSENTIAL OIL BOTTLE ORGANISER

CODE	5765
WHSL.	R145.00
RETAIL	R190.00
PV	0



Transform chaos and clutter into a beautiful, orderly display with the Essential Oil Bottle Organizer. The two-tiered system can be used in a drawer or assembled to stand on a countertop or in a cupboard, making it easy to see and select your favourite essential oils.

VITASSAGE EASY-FILL PIPETTES

CODE	4927
WHSL.	R55.00
RETAIL	R70.00
PV	0



Easy-Fill Pipettes provide a simpler way to transfer oil from the 5 ml and 15 ml bottles. Designed with a narrow tip, the pipette can be easily inserted through the 2 ml orifice, reducing spillage and allowing for simple and quick refilling. These pipettes are a must-have for keeping your 2 ml Vitassage™ and sample bottles filled and ready to go.



YOU AND YOUR HOME

Your home is your sanctuary—a place where life's treasured memories are made with family and friends. These powerful, essential oil-infused products provide you safe solutions that work the way nature intended. From the cleaning products you use to the toothpaste in your cabinet, your home should be the place where total wellness begins.



Young Living
Essential Oil Infused
DISH SOAP
Thieves
100% Pure
100% Natural
8.5 fl. oz. (246 mL)

Young Living
Essential Oil Infused
ALL PURPOSE CLEANER
Thieves
100% Pure
100% Natural
16.9 fl. oz. (495 mL)

Young Living
Essential Oil Infused
LAUNDRY SOAP
Thieves
100% Pure
100% Natural
32 fl. oz. (946 mL)

Young Living
Essential Oil Infused
MOUTHWASH
Thieves
100% Pure
100% Natural
4.8 fl. oz. (139 mL)

Young Living
Essential Oil Infused
FOAMING HAND SOAP REFILL
Thieves
100% Pure
100% Natural
32 fl. oz. (946 mL)

Young Living
Essential Oil Infused
FOAMING HAND SOAP
Thieves
100% Pure
100% Natural
4.8 fl. oz. (139 mL)

THIEVES

Young Living's unique Thieves® blend is crafted in the tradition of four 15th-century French thieves who created a special aromatic combination of clove, rosemary, and other botanicals. Our Thieves line of products brings safe alternatives to your home, so you can replace harsh chemicals with naturally derived formulas that work hard and smell amazing.



THIEVES ESSENTIAL OIL

CODE	CODE
519738	342338
SIZE	SIZE
5 ml	15ml
WHSL.	WHSL.
R208.00	R492.00
RETAIL	RETAIL
R270.00	R650.00
PV	PV
14,75	34,75



Thieves® essential oil blend was inspired by the legend of four 15th-century French thieves who formulated a special aromatic combination composed of clove, rosemary, and other botanicals they used while robbing the dead and dying. Thieves is a powerful blend that contains the naturally

derived constituents limonene, eugenol, and eucalyptol.

INGREDIENTS | Clove, Cinnamon Bark, Rosemary, Lemon, Eucalyptus Radiata

THIEVES AROMABRIGHT TOOTHPASTE

CODE	303938
SIZE	118 g
WHSL.	R155.00
RETAIL	R200.00
PV	10,5



Harnessing the power of Thieves essential oil blend, Thieves® AromaBright® Toothpaste can help promote clean teeth and gums. Free from fluoride, synthetic dyes, and preservatives, Thieves AromaBright Toothpaste is a great choice for the whole family for minty-fresh flavour and

long-lasting fresh breath.

HOW TO USE | Brush teeth every morning and night and preferably after each meal.

THIEVES DISH SOAP

CODE	535038
VOLUME	... ml
WHSL.	R206.00
RETAIL	R270.00
PV	14



With naturally derived ingredients, Thieves® Dish Soap effectively cleans your dishes without chemicals, dyes or synthetics. Young Living essential oils—Thieves, Jade Lemon and Bergamot—work with other plant-based ingredients to leave your dishes sparkling clean.

HOW TO USE | Dispense a small amount of soap with warm running water. Add additional soap as needed.

(NEW!)

THIEVES FOAMING HAND SOAP

CODE	367438
SIZE	236 ml
WHSL.	R197.00
RETAIL	R260.00
PV	13,25



Cleanse your skin with Thieves® Foaming Hand Soap. Blending Thieves, Lemon and Orange essential oils with other natural ingredients, it is a gentle and effective alternative to other soaps. Pump included.

HOW TO USE | Pump foam onto hands, lather, and then rinse thoroughly.

(NEW!)

THIEVES FOAMING HAND SOAP - REFILL

CODE	359438
SIZE	946 ml
WHSL.	R581.00
RETAIL	R760.00
PV	39,5



Cleanse your skin with Thieves® Foaming Hand Soap. Blending Thieves, Lemon and Orange essential oils with other natural ingredients, it is a gentle and effective alternative to other soaps.

HOW TO USE | Refill your 236ml Foaming Hand soap as need be.

(NEW!)

THIEVES FRESH ESSENCE MOUTHWASH

CODE	368338
SIZE	236 ml
WHSL.	R166.00
RETAIL	R220.00
PV	11,25



Thieves® Fresh Essence™ Plus Mouthwash is powered by Thieves essential oil blend for incredibly clean teeth and gums. Combined with naturally derived ingredients, Young Living's mouthwash is safe and effective without any use of alcohol, synthetic dyes or artificial flavours.

HOW TO USE | Rinse mouth with 1 tablespoon or capful of Fresh Essence Plus for 30–60 seconds or as needed.

(NEW!)

THIEVES HOUSEHOLD CLEANER

CODE	374338
SIZE	946 ml
WHSL.	R331.00
RETAIL	R440.00
PV	22,5



Combining naturally derived, plant-based ingredients, Thieves® Household Cleaner provides exceptional home cleaning and purifying power. This multipurpose solution can be used for virtually any surface in your home or office and is safe to use around every member of your family, including children and pets.

HOW TO USE | Use for household cleaning purposes as needed. Dilute or use straight for extra strength. Dilution ratios are listed on the label.

THIEVES LAUNDRY SOAP

CODE	534938
SIZE	946 ml
WHSL.	R434.00
RETAIL	R570.00
PV	29,5



With a plant-based formula, Thieves® Laundry Soap gently and naturally washes your clothes. Natural enzymes and powerful essential oils add to the formula's strength to leave your clothes fresh and clean with a light citrus scent.

HOW TO USE | See product label for usage directions.

(NEW!)

BATH SOAPS

CHARCOAL BAR SOAP

CODE	29706
SIZE	100 g
WHSL.	R177.00
RETAIL	R230.00
PV	12,5

Young Living's Bath & Shower Gel Base is the perfect way to nourish and cleanse your skin. Add a few drops of your favourite essential oil single or blend to the gel base for a luxurious personalised bath or shower gel.

HOW TO USE | *Wet bar and work into a lather. Apply lather to desired areas of the body to cleanse skin. Rinse through thoroughly with water.*



FACIAL CARE

Young Living's skin care products bring together premium botanical and essential oil ingredients to support the appearance of your skin. This line offers essential skin care solutions for every skin type, with products that are expertly formulated to help keep your skin looking healthy and fresh.

GRAPEFRUIT LIP BALM

CODE	517838
SIZE	4.2 g
WWSL	R59.00
RETAIL	R80.00
PV	4,25

(Coming Soon)

LAVENDER LIP BALM

CODE	520338
SIZE	4.2 g
WWSL	R55.00
RETAIL	R70.00
PV	4



Infused with Grapefruit essential oil, wolfberry seed oil, and antioxidants, this refreshing lip balm seals in moisture to prevent dehydration for smooth lips.

HOW TO USE | Apply to lips as needed.



Lavender Lip Balm soothes dry lips, harnessing the power of Lavender essential oil and the moisturising properties of jojoba oil and vitamin E.

HOW TO USE | Apply to lips as needed.





WELLNESS

True wellness starts from within. Go the distance with foods and supplements that nourish your body, satisfy your nutritional needs and tantalize your taste buds.

For more than 700 years, the northwest region of China known as Ningxia has earned a reputation for producing and cultivating premium wolfberries. Also known as goji berries, wolfberries have a rich nutritional profile. NingXia Red is our powerful juice drink created to help energise, fortify and revitalise the body and mind. This delicious, proprietary blend features pure essential oils, Ningxia wolfberry puree and other fruits to supply the body with vital phytonutrients.





NINGXIA RED

These on-the-go packets deliver the same powerful benefits of NingXia Red® in a single 60ml serving that is perfect for your purse, backpack, or bag. The box comes with 30 individual single-serve packets.

HOW TO USE | *Drink 1 packet, 2 times daily.*

NINGXIA RED SINGLES

CODE	352538
SIZE	30 x 60 ml
WHSL.	R1 232.00
RETAIL	R1 620.00
PV	87

Consult individual product labels for safety information.
Product packaging may vary from the images shown in this Product Guide.





SHARING

THE YL LIFESTYLE

With more than 20 years dedicated to developing products that clean the home, nourish the body, beautify the skin and hair, and comfort the spirit, we are proud to bring you choices that support true wellness in every aspect. Without ever wavering in our uncompromising Seed to Seal® commitment, our goal is to provide you with more ways to incorporate wellness into your habits and your home. Achieving financial independence through sharing Young Living with those around you is your opportunity to invite another dimension of wellness to your life.

YOUNG LIVING
ESSENTIAL OILS





WHY JOIN

YOUNG LIVING?

When you join Young Living, you join a supportive global community of individuals who are passionate about natural, authentic solutions for themselves and their families. Young Living membership is much more than access to our essential oils and essential oil-infused products, it also offers:

- **24 percent off retail pricing on all Young Living products:** This substantial discount allows you to discover more of your favourites and share our transformative products with others.
- **The opportunity to participate in our compensation plan:** One of the industry's most generous, our plan offers a higher-than-average payout through commissions, sizeable bonuses, and retail sales—just for sharing essential oils!
- **The convenience of our Essential Rewards programme:** Not only do your favourite products arrive hassle free at your door month after month, but you may also accumulate points toward free products just for placing a recurring monthly order! Plus, joining the Essential Rewards programme offers shipping discounts, loyalty gifts, qualification for certain bonuses, and access to programme-exclusive promotions!
- **Recognition for your talents and hard work:** Every year we host several retreats in beautiful locations around the world to reward and train those who have demonstrated exceptional dedication in building their businesses. Additionally, we offer on-stage recognition for the rank advancements of our members each year at our International Grand Convention.



Set yourself up for success with a Young Living

STARTER KIT!

Our introductory kits have been designed to include cutting-edge business-building materials and more product samples than ever before. These are the perfect way to introduce someone to the Young Living opportunity and lifestyle. Sign up with one of our Starter Kits and enjoy a host of exclusive benefits, including:

- A 24 percent wholesale discount
- The potential to earn commissions and bonuses
- Eligibility to participate in the Essential Rewards programme and earn free products, discounted shipping, and more
- An opportunity to help others discover greater wellness and freedom

GET STARTED NOW AT YOUNGLIVING.COM!



PREMIUM STARTER KIT WITH DEWDROP DIFFUSER

CODE (IT)	29111
WHSL.	R2 268.00
RETAIL	R2 980.00
PV	100

x 1 Premium Essential Oils Collection (10 Oils)

x 1 Dewdrop Diffuser

x 1 Premium Starter-kit Booklet

*Thieves 5ml, Frankincense 5ml, Orange 5ml, Lemon 5ml, Citronella 5ml, Purification® 5ml, Lavender 5ml, Valor® 5ml, Peppermint 5ml, Eucalyptus Radiata 5ml

ESSENTIAL REWARDS

Get your order automatically every month by enrolling in Essential Rewards! With so many perks and bonuses, there's no better time to start than now! Visit YoungLiving.com for more details.

ESSENTIAL REWARDS MEMBERS ENJOY:

- Priority shipments of your favourite Young Living products
- Reduced shipping rates
- Freedom to change or cancel your order anytime
- Discounted pricing on exclusive product kits
- Access to exclusive bonuses, including the Rising Star Team Bonus
- Loyalty gifts for 3, 6, 9, and 12 months of consecutive participation
- Up to 25 percent back in Essential Rewards points with every order to use toward future orders
 1. 1–3 months: 10 percent back in points on your ER order's PV
 2. 4–24 months: 20 percent back in points on your ER order's PV
 3. 25+ months: 25 percent back in points on your ER order's PV

SUBSCRIBE AND SAVE

WITH

ESSENTIAL REWARDS

SIGN UP TODAY AT

WWW.YOUNGLIVING.COM





READY TO JOIN?

Joining Young Living is easy and full of perks! Here's how it works:

1. Go to YoungLiving.com.
2. Click 'Become a Member' and follow the signup prompts, including selecting the Distributor or Customer member option:
 - a. Distributor members enjoy a 24 percent product discount, plus the opportunity to take advantage of the Essential Rewards programme and our generous compensation plan.
 - b. Customer members pay full price for Young Living products with no minimum orders to remain active. Customer members cannot take advantage of Essential Rewards or the compensation plan.
3. If you'd like, select your Starter Kit and Essential Rewards Kit.
4. Add any additional products to your order.
5. Proceed to checkout and complete your enrolment.
6. Begin enjoying the highest quality essential oil-infused products in the world!



INDEX

10 Oil Case (Green)	36		
10 Oil Case (Purple)	36		
30 Oil Case	36		
A			
AromaGlide Roller Fitments	36		
B			
Bergamot	26		
Breathe Again Roll-On	33		
C			
Cedarwood	26		
Charcoal Bar Soap	41		
Christmas Spirit	31		
Citronella	26		
Citrus Fresh	31		
Clary Sage	26		
Copaiba	26		
Cypress	26		
D			
Deep Relief Roll-On	33		
Desert Mist Diffuser	35		
Dewdrop Diffuser	35		
E			
Eucalyptus Globulus	26		
Eucalyptus Radiata	26		
F			
Frankincense	27		
G			
Geranium	27		
Grapefruit	27		
Grapefruit Lip Balm	43		
H			
Helichrysum	27		
I			
(Currently no products under this listing)			
J			
Joy	31		
K			
(Currently no products under this listing)			
L			
Lantern Diffuser	35		
Lavender	27		
Lavender Lip Balm	43		
Lemon	27		
Lemongrass	27		
M			
Marjoram	27		
Melrose	31		
N			
NingXia Red Singles	42		
O			
Oil Bottle Cap Labels	36		
Oil Bottle Organiser	36		
Oil Sample Bottles	36		
Orange	28		
Orb Diffuser	35		
P			
Patchouli	28		
Peace & Calming	31		
Peppermint	28		
Premium Starter Kit with Dewdrop Diffuser	49		
Purification	31		
R			
R.C.	31		
Raven	31		
Rose	28		
S			
Sacred Frankincense	28		
Spearmint	28		
T			
Tea Tree	28		
Thieves	32, 40		
Thieves AromaBright Toothpaste	40		
Thieves Dish Soap	40		
Thieves Foaming Hand Soap	40		
Thieves Foaming Hand Soap – Refill	40		
Thieves Fresh Essence Mouthwash	40		
Thieves Laundry Soap	40		
Thieves Household Cleaner	40		
U			
(Currently no products under this listing)			
V			
Valor	32		
Vetiver	28		
Vitassage Easy Fill Pippets	36		
W			
White Angelica	32		
Wintergreen	29		
X			
(Currently no products under this listing)			
Y			
Ylang Ylang	29		
YL Haven	32		
YL Compensation Booklet	50		
YL Lifestyle Booklet	50		
YL Product Guide	50		
YL Starter-Kit Booklet	50		
Young Living V-6	33		



YOUNG LIVING
EST. 1994

25 YEARS YOUNG

25TH ANNIVERSARY



SA V.1

