



Storage:

If you won't use your nebuliser for an extended period of time or need to relocate it, follow these steps below for proper storage:



General maintenance tips:

- Avoid using rubbing alcohol with over 75 percent concentration to clean your nebuliser or it might damage the device.
- When running your nebuliser with rubbing alcohol, keep the indoor air circulating to reduce the risk of fire hazards.
- For best result, clean the nozzle 1–2 times per week and anytime you change out an essential oil.
- It is advisable to change the oil pipe before switching to another essential oil.

Troubleshooting

If your nebuliser isn't working the way it should, unplug the unit and use these guidelines to diagnose the issue.

Issue	Possible Cause	Solution
When switched on, the nebuliser does not operate.	Power connection	Check that the cable is securely plugged into the USB port. Try detaching and reconnecting it.
	Low battery level	Charge the battery until it is fully charged. If the battery is completely drained, charge it for a few minutes first to see if that resolves the issue.
	Uneven surface	Check that the nebuliser is on a flat surface. If it's tilted more than 45 degrees, it will automatically shut down. After moving the nebuliser to a level surface, press On/Off button once.
The nebuliser is on but there is no mist.	Detached nozzle	Remove the nozzle and reattach it, ensuring that the nozzle is lined up with the nozzle alignment mark.
	Insufficient oil	Check if the oil bottle is empty or lower than the end of the oil pipe. If needed, add more essential oil, replace the oil bottle with a new one, or use a different oil pipe.
	Oil buildup on nozzle	If essential oil buildup is present, follow the cleaning instructions (see "Cleaning and Maintenance"). Avoid diffusing thicker essential oils like Vetiver and Sandalwood. Also never mix essential oils with water to operate the device.
	Misaligned oil pipe	Reinsert the oil pipe into the nozzle.
Oil is leaking from the unit.	Uneven surface	Move the nebuliser to level surface if it's on a tilt and press the On/Off button again. Avoid shaking the nebuliser while it's running.
	Detached cover	Check that cover is closed properly.
	Misaligned misting hole	Check that the nebuliser hole is facing upward and reattach the nozzle if needed.
	Putting the nebuliser improperly	Do not store the nebuliser upside down for more than 24 hours.
	The device is being upside down and shake heavily inside of carrying bag or suitcase	Take out the nozzle and remove the oil bottle from the device. Place the device on flat surface for 2mins. After that re-install the nozzle back to the device for operation.

Product specifications

Product name:	Wanderful Nebuliser	Coverage area:	Up to 80 sq. m.
Model code:	BLC-010	Run time:	2 hours on low or 4 hours on high
Product dimensions:	72mm x 135mm	Design:	USA
Material:	PP + Aluminum Diffuser	Made in China	
Power:	5V --- 1A	Manufactured for Young Living Essential Oils	
Lithium battery:	3.6V --- 2500mAh		
Weight:	330g		

Warranty

Young Living Essential Oils (YLEO), 1538 W. Sandalwood Drive, Lehi, Utah 84043, subject to the exclusions contained below, warrants its nebuliser to be free from defects in materials and workmanship under normal consumer usage for a period of 12 calendar months from the date of original purchase.

This warranty does not cover:

1. Defects or damage resulting from use of the product in other than its normal and customary manner
2. Defects or damage from misuse, accident, or neglect
3. Defects or damage from use of oils other than those supplied or sold by Young Living Essential Oils or an authorised distributor
4. Defects or damage from use of materials other than essential oils
5. Defects or damage from improper testing, operation, maintenance, installation, adjustment, or any alteration or modification of any kind
6. Breakage or damage caused by use that is other than the specified voltage
7. Breakage or damage caused by non-household use (i.e. natural disaster, commercial use)
8. Products disassembled or repaired by anyone other than a Young Living Essential Oils authorised agent so as to adversely affect performance or prevent adequate inspection, verification, and testing to verify any warranty claim. If there are any signs that the diffuser had been opened, the warranty will be void

9. Products with labels removed or illegible serial numbers
10. Marring such as scratches on any plastic surfaces and externally exposed parts resulting from normal use
11. Damage resulting from normal wear and tear
12. Damage resulting from the use of metal tools to clean the unit

Proof of product damage and purchase is required.

This limited warranty is exclusive to the buyer, applies to the new nebuliser purchased from Young Living Essential Oils, and is non-transferable. Please retain your original purchase receipt. In the event of a warranty claim or return for repair, a copy of the purchase receipt should accompany the diffuser when shipped to YLEO.

To make a warranty claim, please contact the Young Living Member Services of the country you've purchased the product for assistance. If it is determined by Member Services that the nebuliser is to be shipped back to YLEO, the buyer will need to send the product back in its original box (if available), a copy of the original purchase receipt, and the YLEO Return Merchandise Authorization (RMA#) displayed clearly on the receipt, which will be provided by Member Services.

U.S. shipping:

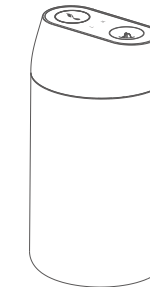
Young Living Essential Oils Returns/ RMA# _____
 142 East 3450 North Spanish Fork, UT 84660
 For all other market addresses and contact information, visit YoungLiving.com.

NOTICE:

Please be sure to complete the YLEO return form and send back all the items listed for timely processing of your return. If YLEO has determined, based on an evaluation and inspection of the diffuser, that the defect or malfunction is covered under warranty, YLEO will send a replacement diffuser at no additional charge. Young Living reserves the right for final decision of free product maintenance provided within the warranty period and any other conditions.

Product name: Wanderful Nebuliser
 Date of purchase: _____
 Point of purchase: _____

Batch no: _____
 Model no: _____



User's Manual Wanderful Nebuliser (Rechargeable)

Thank you for your purchase!
 Please read the user manual carefully before use.
 Ver.C

Safety precautions

Safety first! Before you start using the nebuliser, please read and follow these tips to ensure safe operation:

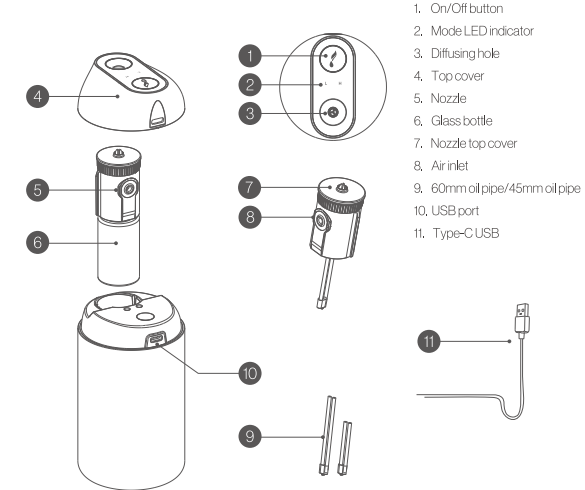
- Use your nebuliser for the purposes described in this manual only.
- Avoid moving or shaking the nebuliser while in use.
- Keep the nebuliser out of reach of children.
- Limit use by persons (including children) with reduced physical, sensory, or mental capabilities, or lack of experience and knowledge in using nebulisers unless they have been given supervision or instruction concerning the use of the nebuliser by a person responsible for their safety.
- Avoid dripping essential oils onto the exterior of the product or onto furniture.
- Do not inhale the aroma mist directly from the spout.
- If you have any physical condition that require special care, such as pregnancy, respiratory issues, cancer, epilepsy, or other illnesses, please consult your doctor before using essential oils. Turn off the nebuliser and open the windows for ventilation if you start to feel uncomfortable.
- Always handle essential oils with care as they are highly concentrated.

Warnings

- Avoid placing the nebuliser under direct sunlight, in a hot environment, near sources of ignition, or around pressurised objects and combustibles.
- Use only the type-C USB provided in the package to avoid damage to your nebuliser.
- To prevent electric shock, always disconnect the nebuliser from the power source and remove the USB cord before cleaning and maintenance.
- Unplug the nebuliser if you won't be using it for a long period of time (see "Cleaning and Maintenance").
- When unplugging the USB, steady the nebuliser with one hand and pull from the connector head instead of pulling the cord directly.
- Stop using the nebuliser immediately and unplug the USB in the event of smoke, burning smell, unusual sounds, or other anomalies.
- Do not modify, fix, or dismantle this product, as fire, electric shock, or damage may occur.
- Do not use the nebuliser if it shows obvious signs of damage.
- Do not handle the nebuliser and power outlet with wet hands or let water or other liquids spill onto them as this may result in electric shock.

Diagram

Main body



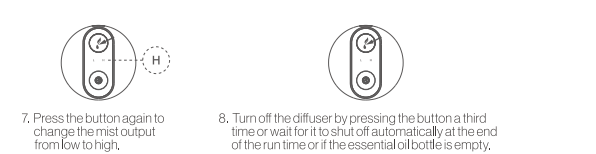
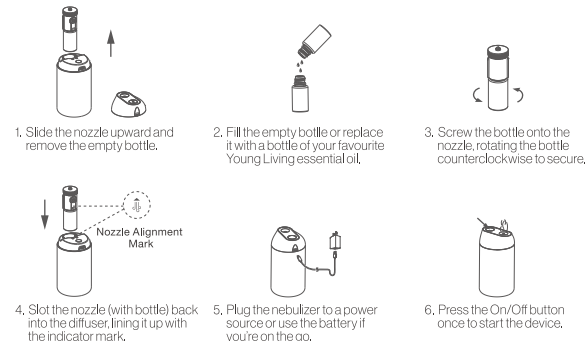
Usage instructions

Now that you know how to safely use your nebuliser, you're ready to start filling your space with your favourite aromas. Here's what to do:

Step 1: Charge the battery

Make sure the nebuliser is fully charged before you use it for the first time. To charge the battery, plug in the Type-C USB and into a power source. Charging will take up to six hours. Once the battery is fully charged, you'll enjoy up to 10 hours of usage on high or 18 hours of usage on low mode.

Step 2: Add your oils and nebulise



Usage tips:

- For best results, we recommend using only high-quality, lab-tested essential oils. Artificial fragrance, perfumes, or impurities could damage the nebuliser.
- Do not diffuse carrier oils or thicker essential oils like Vetiver or Sandalwood, as they may clog the diffuser.
- The strength of the aroma will vary depending on mist output settings and the type of oil you use. Try different settings and oils to find the combination that fits your needs.
- Do not remove the nozzle or move the nebuliser during operation.
- Keep the device on a stable and flat surface. Carpet, cushions, or other uneven surfaces could affect the operation.
- Use any 5ml, 10ml or 15ml bottle of your favourite Young Living essential oil or the default oil bottle that comes with this nebuliser. When using bottles of different sizes, change the oil pipe to fit the bottle.
- Do not dilute or mix oils with water when using this nebuliser or you risk damaging it.
- Do not turn on the nebuliser when it is upside down.
- Empty the oil bottle before placing the nebuliser in a suitcase or handbag to avoid any damage from the nebuliser turning on accidentally.

Settings

Check out this helpful guide to your nebuliser's different modes and settings.

On/Off button:

- Press the On/Off button once to turn on the device. The default setting is low level output (L).
- Press a second time to switch to high level output (H).
- Press a third time to turn off the device.

Indicator light:

Operating: Light is on	Low Battery: Light flashes one time per minute
Charging: Light changes from bright to dark	Battery Fully Charged: Logo light on

Mist output:

- Low level output (L)
 - 13 seconds on/47 seconds off
 - 2 hours total run time
- High level output (H)
 - 4 minutes on/6 minutes off
 - 4 hours total run time

Auto shut-off:

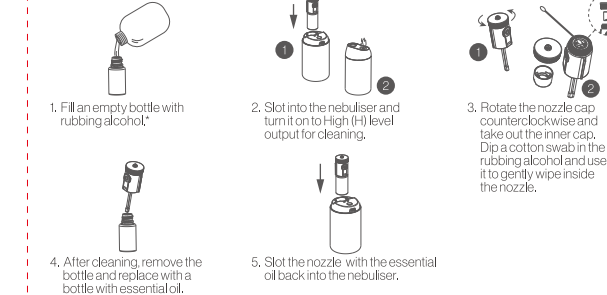
- To prevent leaks, the nebuliser will automatically shut off when tilted over 45 degrees.
- The nebuliser will also shut off automatically after it reaches the end of the set time.

How to change the oil pipe:

- Gently pull out the pipe from the nozzle and then replace the new oil pipe into the nozzle. Ensure that the pipe is securely inserted into the nozzle's pipe hole.

Cleaning and Maintenance

Cleaning instructions:



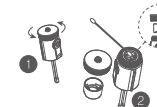
*The rubbing alcohol should be under 75 percent concentration.

Battery care:

- Recharge the nebuliser at least once every three months. Leaving the battery at 0 percent charge for long periods of time may reduce battery life.*
- Use your nebuliser only within the temperature range below to preserve the battery life.
 - Charging: 59°–113°F (or 15°–45°C)
 - Working: 32°–140°F (or 0°–60°C)

*As with most lithium-ion batteries, the battery life will gradually decrease over time. After about 500 charge cycles, your diffuser's battery life will decrease to about 80 percent compared to the battery on a new device. This is normal and does not represent an issue with the device or with the battery.

When you put it back, make sure the inner lid cap hole aligned with the nozzle air inner hole.



1. Rotate the nozzle cap counterclockwise and take out the inner cap. Dip a cotton swab in the rubbing alcohol and use it to gently wipe inside the nozzle.