

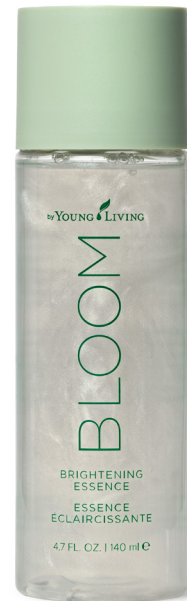
BLOOM by Young Living

BRIGHTENING ESSENCE

140 ml Item No. 32678

Dull skin's BFF is BLOOM by Young Living Brightening Essence. This luminous, gel-textured essence infuses moisture into the skin, refining skin's look and texture. Its formula supports skin barrier function and leaves your skin refreshed and radiant.

Developed to address uneven skin that has lost its natural radiance, the BLOOM by Young Living Brightening Skin Care Collection creates a system for brighter and more luminous looking skin using naturally derived ingredients. Harnessing the power of the Sheerlumé Brightening Complex, the BLOOM Brightening Skin Care Collection leaves you with radiant, glowing skin.



KEY INGREDIENTS

- *Lilium candidum* (Madonna lily) leaf cell extract: Helps to brighten the skin, contributing to a more uniform tone.
- *Pyrus malus* (apple) fruit extract: Can increase the skin's hydration, as well as contribute to smoother-feeling skin.
- *Chlorella vulgaris* (green algae) extract: Provides hydration.
- Sheerlume Brightening Complex: Composed of Vetiver, Blue Cypress, Davana, Royal Hawaiian Sandalwood, Clove, Jasmine, Carrot Seed, Spearmint, Geranium, and Frankincense essential oils.

BENEFITS AND FEATURES

- Brightens and hydrates skin.
- Gives skin a radiant glow.
- Helps the appearance of an even and smooth skin tone.
- Non-drying, non-stripping formula.
- Dermatologically tested.
- Naturally derived, gentle ingredients.
- Formulated without fragrance, gluten, parabens, phthalates, synthetic fragrance, sulphates, petroleum, and mineral oil, or any of the thousands of potentially problematic ingredients we refuse to use.

by YOUNG LIVING

BLOOM

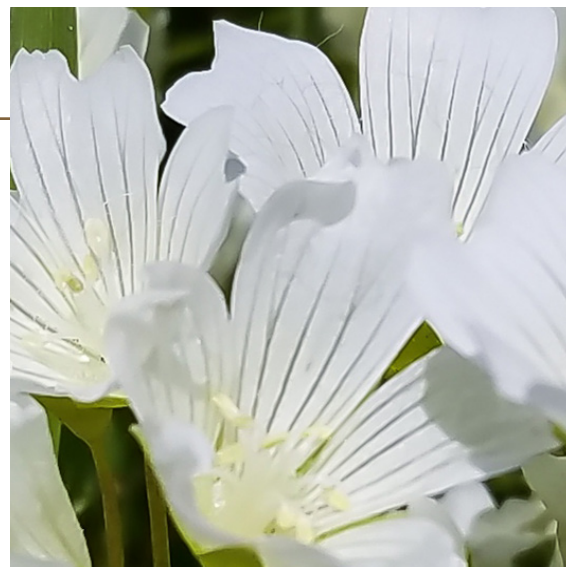
BLOOM by Young Living

BRIGHTENING ESSENCE

PRODUCT BACKGROUND

The BLOOM by Young Living Brightening Skin Care Collection is infused with the most advanced naturally derived ingredients available to brighten the skin's appearance and add natural radiance. BLOOM products are formulated free of synthetic fragrance—just one more expression of our unwavering commitment to gentle beauty. Featuring the Sheerlume Brightening Complex, the BLOOM Brightening Skin Care Collection helps to intensify hydration, minimise the appearance of future damage, and help improve the appearance of an even skin tone.

On the inside of every BLOOM by Young Living box, you'll find a colour and cut-out flower activity to encourage the reuse of packaging and to help spread the message of reducing waste.



DIRECTIONS

Gently shake before use. Pour a small amount into palms. Rub hands together and lightly press palms into skin from

the centre of face outwards, including neck and décolletage. Repeat morning and night.

CAUTIONS

Keep out of the reach of children. For external use only. Avoid contact with eyes. Discontinue use if irritation occurs.

Ingredients:

Aqua/Water/Eau, Glycerin, Pyrus malus (Apple) fruit extract, Sea water/Eau de mer, Levulinic acid, Xanthan gum, Benzoic acid, Glycyrrhiza glabra (Licorice) root extract, Sodium hyaluronate, Sodium levulinate, Sodium phytate, Caprylyl/Capryl glucoside, Lepidium meyenii root extract, Maltodextrin, Lilium candidum leaf cell extract, Mica, Sodium cocoyl glutamate, Phenethyl alcohol, Titanium dioxide, Glyceryl caprylate, Saccharide isomerate, Citric acid, Chlorella vulgaris extract, Polyglyceryl-6 oleate, Vetiveria zizanioides* (Vetiver) root oil, Callitris intratropica* (Blue cypress) wood oil, Artemisia

pallens* (Davana) flower oil, Lactic acid, Sodium surfactin, Santalum paniculatum* (Royal Hawaiian Sandalwood™Δ) wood oil, Eugenia caryophyllus* (Clove) bud oil, Jasminum officinale* (Jasmine), Daucus carota sativa* (Carrot) seed oil, Mentha spicata* (Spearmint) leaf extract, Pelargonium graveolens* (Geranium) flower oil, Boswellia carterii* (Frankincense) oil.

*100% pure essential oil

ΔRoyal Hawaiian Sandalwood is a trademark of Jawmin, LLC.

by YOUNG LIVING

BLOOM